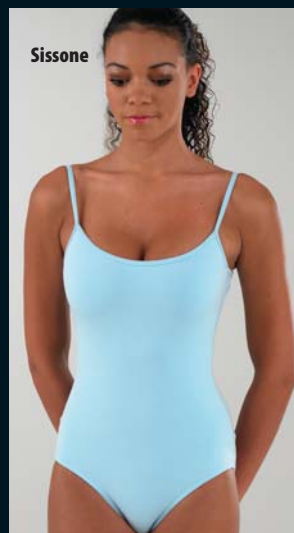


THE STUDIO BOOK



DanceForce



Sissone

Sissone
L5407

Sissone

High leg low back round front cami leotard.

90% cotton, 10% spandex.

Colours: Black, Burgundy, Navy, Royal, Lavender, Pink, Navy, Royal, Pastel Blue, White.

Sizes: P, S, M, L, XL (XL Black only).

Lyric – R5130

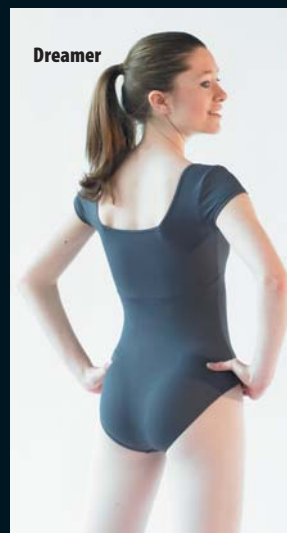
Wrap ballet skirt with 100% polyester georgette ribbon tie.

Colours: Black, Burgundy, Navy, Royal, Purple, Red, White.

Sizes: P/S, M/L.



Lyric
R5130



Dreamer

Dreamer
L2712

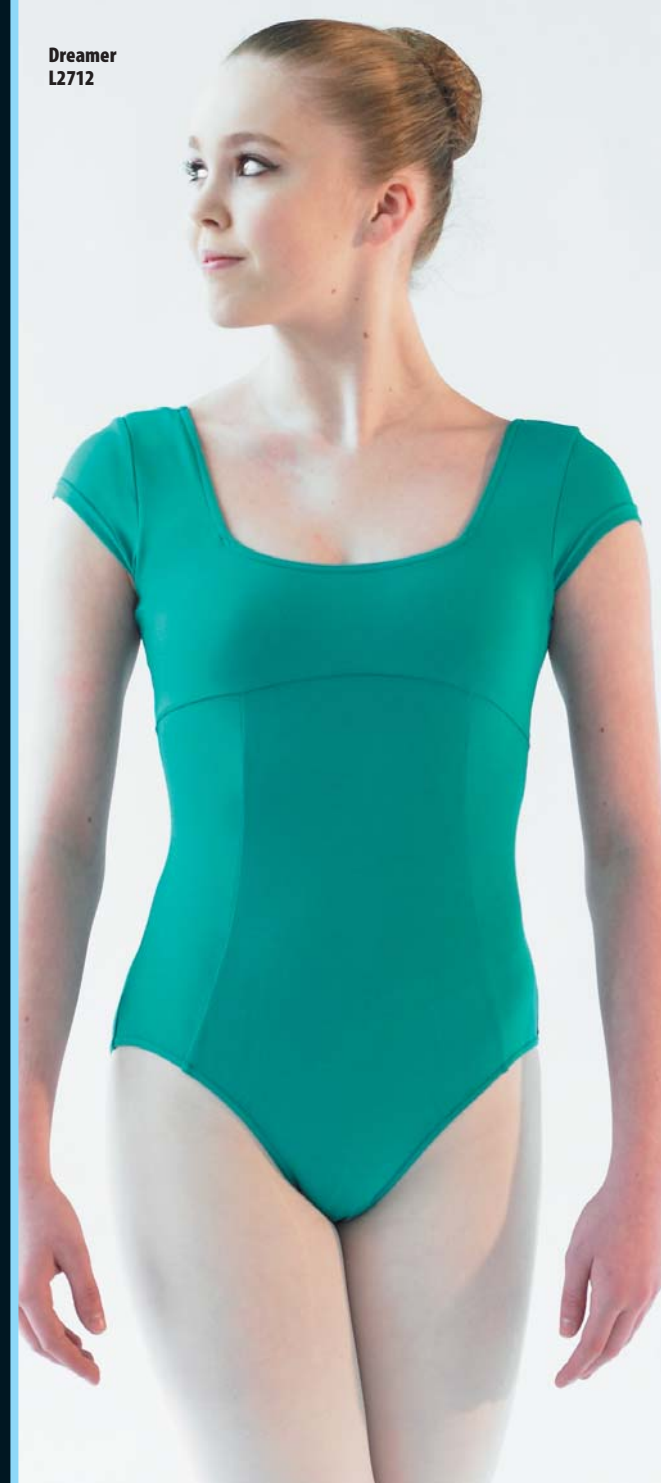
Dreamer

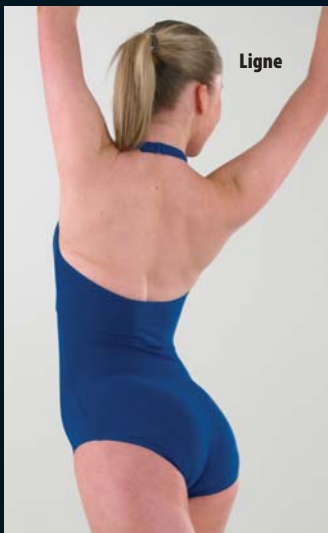
Ladies square neck cap sleeve leotard.

87% tactel, 13% spandex.

Colours: Red, Jade, Steel, Black, Chocolate.

Sizes: P, S, M, L, XL (XL Black only).





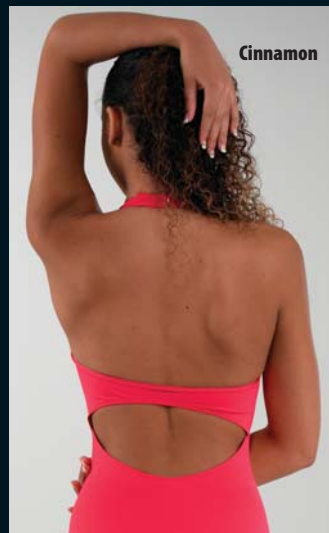
Ligne

Ligne

Halterneck leotard.
90% cotton, 10% spandex.
Colours: Black, Royal, Burgundy.
Sizes: P, S, M, L.



Ligne
L3915



Cinnamon

Cinnamon

Halterneck, twist front leotard.
87% tactel, 13% spandex.
Colours: Black, Hot Pink.
Sizes: P, S, M, L.



Cinnamon
L2645

BLOCH[®]

For Bloch size chart see page 44

capezio

CC101

Princess camisole leotard.
90% cotton, 10% Lycra®
spandex.
Colours: Black, Burgundy,
Navy, Pink, White, Hunter.
Adult sizes: XS, S, M, L.

260

Georgette Wrap Skirt.
100% polyester.
Colours: Black,
Burgundy, Navy, Pink,
White.
Sizes: Adult one size.

CC110

Camisole leotard
with BraTek.
90% cotton, 10% Lycra®
Colours: Black,
Burgundy, Navy.
Sizes: XS, S, M, L.



CC102

V neck camisole leotard.
90% Cotton 10% Lycra® spandex.
Colours: Black, Burgundy, Hunter,
Light Blue, Navy, Pink, White,
Copen, Amethyst.
Sizes: XS, S, M, L, XL.
(XL Black only)

CC420/CC420c

Princess short sleeve leotard.
90% Cotton 10% Lycra® spandex.
Colours: Black, Burgundy, Navy,
Pink, White, Hunter (adult only).
CC420C Child Sizes: S, I, M, L.
CC420 Adult Sizes: XS, S, M, L, XL.



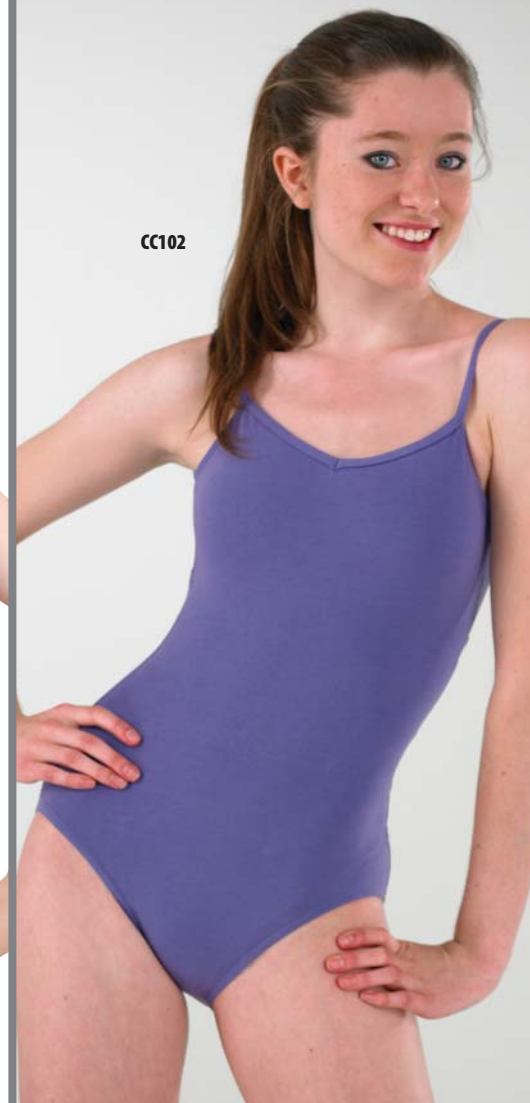
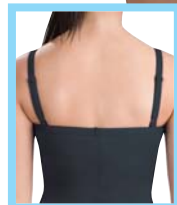
CC101

260



CC110

BraTek® is a unique
bra liner that is
partially attached
for freedom of
movement.
Shoulder straps are
½" and adjustable.
Features a back
clasp with 3 hook
positions for the
perfect fit.



CC102



CC420/CC420C

For Capezio size chart see page 45

Introducing *Starmaker* in the studio.



705/706

Starmaker sweatpants.
Colour: Black only.
Child sizes: 0, 1, 2, 3a
Adult sizes: 3, 4, 5, 6.

3214

Starmaker two-tone leotard with crushed velvet detail. Double fronted.
Colours: Purple, Green, Deep Red, Royal.
Sizes: 3a, 3, 4, 5.

3213

Starmaker square neck matt Lycra® leotard. Double fronted.
Colours: Black, Red, Hot Pink, Electric Blue, Navy.
Sizes: 3a, 3, 4, 5.

3215

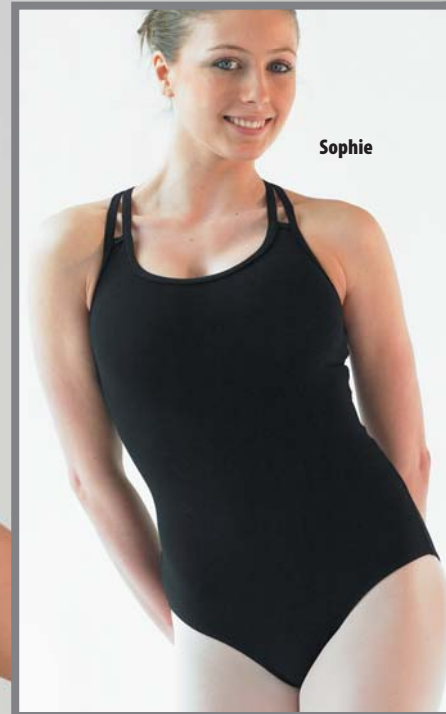
Starmaker camisole dress. Cotton/Lycra® with georgette skirt. Double fronted.
Colours: Black, White, Burgundy.
Child sizes: 1, 2, 3a.
Adult sizes: 3, 4, 5.



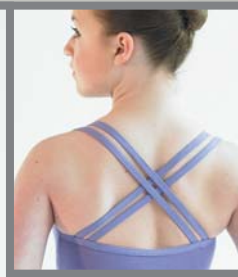
Emilie

Emilie

Nylon/Lycra® skirted sleeveless leotard with front lining and gathered bustline.
Colours: Pink, Lilac, Yellow.
Sizes: 0, 1, 1b, 2, 3a, 3*.



Sophie



Sophie

Double strap camisole leotard with front lining. Cotton/Lycra®
Colours: Lavender, Purple, Black, Navy.
Sizes: 3a, 3*, 4*, 5*, 6*.

Camille

Matt Nylon/Lycra® sleeveless leotard with front lining and gathered bustline.
Colours: Pink, Lilac, Yellow, Black, Damson.
Sizes: 1, 1b, 2, 3a, 3*, 4*, 5*, 6*.



Camille

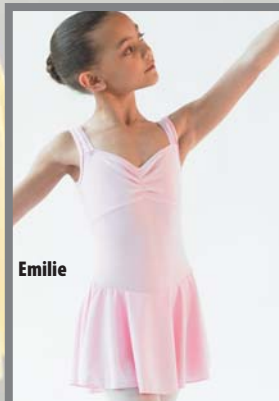
Nancy

Cotton/Lycra® leotard with adjustable straps, and bra shelf lining.
Colours: Black, Navy, Plum.
Sizes: 2, 3a, 3*, 4*, 5*, 6*.



Nancy

Nancy

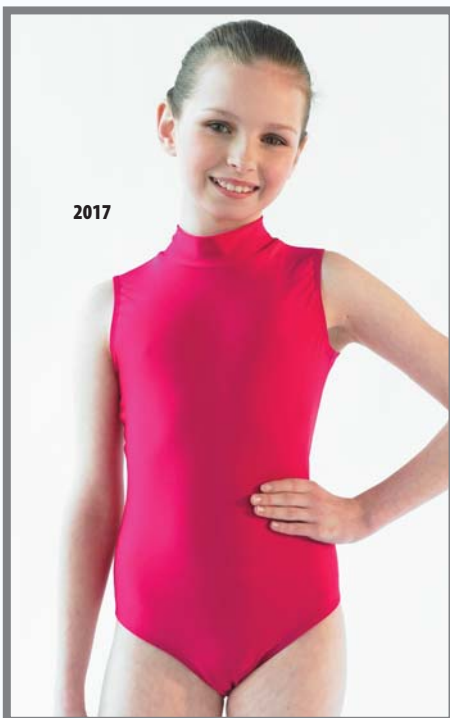


Emilie



Emilie





2017

2017

Nylon/Lycra® sleeveless leotard with keyhole back.

Colours: Black, Red, Purple, Royal, Raspberry, Shocking Pink, Kingfisher.

Sizes: 1, 1b, 2, 3a, 3*, 4*, 5*

VCSS

Velour/Lycra® circular short skirt.

Colours: Black, Red, Kingfisher, Amethyst, Flo Pink.

Child sizes: Small, Medium, Large

Adult size: One size*.

DEE

Velour/Lycra® sleeveless leotard with turtle neck and keyhole back.

Colours: Black, Red, Kingfisher, Amethyst, Flo Pink.

Sizes: 1, 1b, 2, 3a, 3*, 4*, 5*



ISTDSS

ISTDSS

Nylon/Lycra® short sleeve leotard with gathered bustline and flared skirt.

Colours: Lilac, Pastel Pink, Rose Pink, Kingfisher, Seychelles (illustrated).

Sizes: 0, 1, 1b, 2, 3a, 3*

ISTDJ

Nylon/Lycra® sleeveless leotard with gathered bustline and flared skirt.

Colours: Rose Pink, Black, Red, Purple, Kingfisher, Royal, Pastel Pink, Seychelles, Shocking Pink, Pale Blue, Lilac.

Sizes: 0, 1, 1b, 2, 3a, 3*

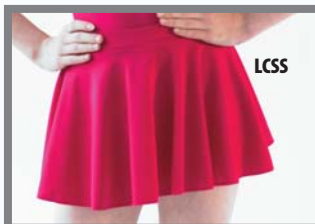
LCSS

Nylon/Lycra® circular short skirt.

Colours: Black, Purple, Kingfisher, Royal, Lilac, Pastel Pink, Raspberry, Navy, Shocking Pink, Red, White, Panama Blue, Vert Green.

Child sizes: S, M, L

Adult size: One size*



LCSS



DEE

DEE

VCSS

ISTDJ

ISTDJ

ISTDJ

For Rock Valley size chart see page 44

ROCH VALLEY



L108

L109



LCROP

HOT

LCROP

LJAZZ

L108

Nylon/Lycra® sleeveless catsuit.
Colours: Purple, Kingfisher, Raspberry, Seychelles, Arctic Blue, Navy, Black, Vert Green, Red, Royal, Lilac, White.
Sizes: 0, 1, 1b, 2, 3a, 3*, 4*, 5*

L109

Nylon/Lycra® long sleeved catsuit.
Colours: Purple, Raspberry, Black, Vert Green, Red, Royal, Kingfisher, White.
Sizes: 1, 1b, 2, 3a, 3*, 4*, 5*

LCROP

Nylon/Lycra® crop top.
Colours: Purple, Kingfisher, Raspberry, Black, Red, Royal.
Sizes: 1, 1b, 2, 3a, 3*, 4*, 5*

HOT

Nylon/Lycra® micro shorts.
Colours: Black, Purple, Royal, Kingfisher, Raspberry, Red, Royal.
Sizes: 1, 1b, 2, 3a, 3*, 4*, 5*

LJAZZP

Nylon/Lycra® bootleg jazz pants.
Colours: Purple, Kingfisher, Raspberry, Black, Red, Royal.
Sizes: 1, 1b, 2, 3a, 3*, 4*, 5*

CYC

Nylon/Lycra® cycle shorts.
Colours: Black, White, Red, Purple, Kingfisher, Royal, Raspberry, Navy.
Sizes: 1, 1b, 2, 3a, 3*, 4*, 5*

LST

Nylon/Lycra® stirrup tights.
Colours: Black, Purple, Kingfisher, Royal, Raspberry, Vert Green, Red, White, Lilac, Pastel Pink.
(Sizes 6 & 7 Black only.)
Sizes: 0, 1, 1b, 2, 3a, 3*, 4*, 5*, 6*, 7*

FLST

Nylon/Lycra® footless tights.
Colours: Black, Purple, Kingfisher, Royal, Raspberry, Navy, Red, White.
(Sizes 6 & 7 Black only.)
Sizes: 0, 1, 1b, 2, 3a, 3*, 4*, 5*, 6*, 7*



CYC



CYC



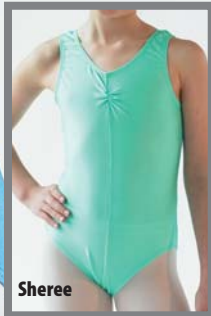
LST



FLST



Sheree



Sheree

Sheree

Nylon/Lycra® sleeveless leotard with gathered bustline.
 Colours: Black, Purple, Kingfisher, Royal, Lilac, Pastel Pink, Raspberry, Navy, Claret, Shocking Pink, Panama Blue, Red, White, Vert Green, Arctic Blue (illustrated), Seychelles (illustrated).
 (Sizes 6 & 7 Black, Navy, Purple, Claret only.)

Sizes: 0, 1, 1b, 2, 3a, 3*, 4*, 5*, 6*, 7*



Martene



Tara

Martene

Nylon/Lycra® long sleeved leotard with gathered bustline.

Colour: Black only.
 Sizes: 0, 1, 1b, 2, 3a, 3*, 4*, 5*, 6*, 7*

Tara

Nylon/Lycra® leotard with camisole top, low back, gathered bustline and panelled bodice.

Colours: Black, Purple, Kingfisher, White, Pastel Pink, Claret, Seychelles, Royal.
 (Sizes 6 & 7 Black only.)

Sizes: 1, 1b, 2, 3a, 3*, 4*, 5*, 6*, 7*

2008

Nylon/Lycra® long sleeved turtle neck leotard with keyhole back.

Colour: Black only.
 Sizes: 0, 1, 1b, 2, 3a, 3*, 4*, 5*



2008



Joanne

Joanne

Nylon/Lycra® sleeveless leotard with scooped neck.

Colours: Black, Royal, Lilac, Pastel Pink, Raspberry, Purple, Vert Green, Red, Kingfisher, White.

Sizes: 0, 1, 1b, 2, 3a, 3*, 4*, 5*



Jeanette

Jeanette

Nylon/Lycra® short sleeved leotard with gathered bustline.

Colours: Black, Royal, Lilac, Pastel Pink, Raspberry, Vert Green, Red, White.

Sizes: 0, 1, 1b, 2, 3a, 3*, 4*, 5*

ROCH VALLEY

For Roch Valley size chart see page 44

**REGULATION AND
EXAMINATION
GARMENTS BY**

StarMaker



ST20



ST24

ST22



ST20

Cotton/Polyester/Lycra® short sleeved leotard with belt.

Colour: Navy only.

Size: 1, 2, 3a, 3*, 4*

ST22

Grades 1 & 2. Cotton/Polyester/Lycra® sleeveless leotard with scooped neck and belt.

Colours: White, Panama Blue, Pink, Lavender.

Size: 0, 1, 2, 3a, 3*

ST24

Grades 3, 4 & 5. Cotton/Polyester/Lycra® sleeveless leotard with gathered bustline and belt.

Colours: Mulberry, Navy.

Size: 1, 2, 3a, 3*, 4*

RBC

Elastic belt. Pack of 10 (no mixed colours).

Colours: Black, White, Pink, Pale Blue, Mulberry, Lavender, Navy, Rose, Plum, Sky.



ST12

Cotton/Polyester/Lycra® sleeveless leotard.
Grades 5 & 6.
Colours: Purple, Plum.
Size: 2, 3a, 3*, 4*, 5*

ST14

Cotton/Polyester/Lycra® sleeveless leotard
with gathered bustline.
Colour: Navy only.
Size: 2, 3a, 3*, 4*, 5*

ST10

Cotton/Polyester/Lycra® sleeveless leotard.
(Primary – Grade 4).
Colours: Plum, Sky Blue.
Size: 0, 1, 2, 3a, 3*, 4*

ST16

Wrapover polycrepe skirt.
Colours: Plum, Purple, Navy, Sky Blue.
Size: 20-24", 24-28", 28-32"

ST18

Circular chiffon skirt.
Colours: Plum, Sky Blue.
Size: 18", 20", 22", 24", 26", 28"

**REGULATION AND
EXAMINATION
GARMENTS BY**

StarMaker

ST34

Nylon/Lycra® leotard with camisole top, tailored bustline, low back and plain bodice.

Colour: Black only.

Size: 0, 1, 2, 3a, 3*, 4*

ST36

Cotton/Polyester/Lycra® leotard with camisole top and belt.

Colours: Black, Navy.

Size: 2, 3a, 3*, 4*, 5*

ST30

Grade Primary Cotton/Polyester/Lycra® short sleeved, scoop backed leotard.

Colours: White, Panama Blue, Pink, Black.

Size: 0, 1, 2, 3a, 3*

ST32

Pre-primary/primary georgette petal skirt with velcro fastening.

Colours: Lilac, Pink, Aqua.

Sizes: 18", 20", 22", 24"

ST26

Nylon/Lycra® sleeveless leotard with belt.

Colours: White, Panama Blue, Pink, Black.

Size: 0, 1, 2, 3a, 3*, 4*

ST28

Georgette wrapover skirt.

Colours: White, Pale Blue, Pink, Black.

Size: 18", 20", 22", 24", 26", 28"



ST34

ST36



ST30

ST32



ST26

ST28